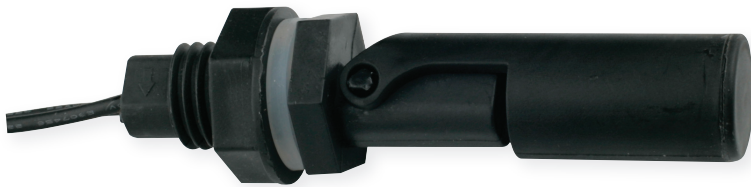


Sensaphone Accessory Guide

General Accessories

Float Switch



Description

The FGD-0222 float switch is a plastic side mounted float switch that is cost effective for level control applications in small tanks where it is more convenient to install a level switch through the sidewall of the tank. This style float switch can be rotated for Normally Open or Normally Closed operation. Combine two switches at different levels for high and low level or pump control or alarming.

Package Contents

(1) Float switch

Specifications

Operating Temperature Range:
-10-80°C

Contact Rating:
50W

Max Switch Volt:
100VDC

Housing:
Black plastic

Compatibility:
400, 800, 1400, 1800, 2000, 2800,
StationSitter, Skymetry, Express II
and SCADA

*Specifications subject to change without notice

Manufacturer Part Number.FGD-0222

SENSAPHONE®

901 Tryens Road
Aston, PA 19014
Ph: 610-558-2700
F: 610-558-0222
www.sensaphone.com