

WatchOUT™

Reliable Outdoor Detection

Providing reliable intruder detection in outdoor environments is a huge challenge. WatchOUT™ uses **Selective Event Recognition** to distinguish between real intrusion events and the numerous false alarm causes inherent in the unstable outdoor environment.

WatchOUT's Selective Event Recognition is enabled by 4 detection channels:

- **Sway Recognition Technology** uses 2 Microwave channels for recognizing and excluding swaying objects such as bushes or tree limbs.
- **Digital Correlation Technology** uses 2 PIR channels with separate optics to ensure that only targets creating a similar and correlated signal in both PIR channels can trigger an alarm. Pets, rapid temperature changes, and reflections are ignored.

WatchOUT™ by RISCO Group - Reliable Outdoor Detection Begins Here!



Main Features

- 2 MW and 2 PIR channels
- Coverage 15m (50') 90° or 23m (75') 5°
- Mounting height 1.0m-2.7m (3'3" to 8'10")
- Pet immune up to 70cm (2'4") animal height
- Wide range of professional swivels
- Optional high quality camera
- Active IR for Anti-Mask and "Dirty Lens" alerts
- Unique Remote Control and Diagnostic capabilities
- MW "Anti-Collision" enables adjacent detector installations
- Protective hood and IP65 environment rating



RISCO
GROUP
Creating Security Solutions.
With Care.
RKONET

DIYControls.com
Hydra-Numatic Sales Co.
22 Park Place
Butler, NJ 07405
1-800-487-1363
sales@diycontrols.com

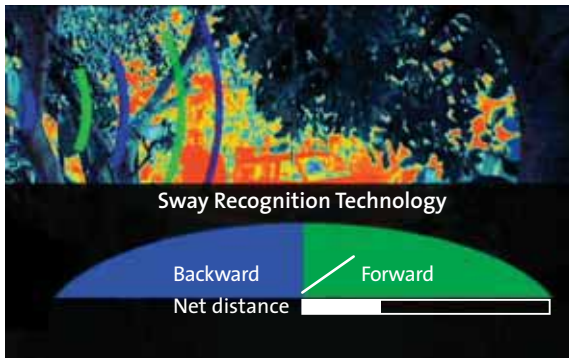
riscogroup.com

Sway Recognition Technology

Sway Recognition Technology recognizes and excludes objects that sway but don't travel such as tree branches, bushes, swaying signs, etc.

Sway Recognition Technology is enabled by two microwave channels that distinguish between the microwave pulses of approaching and receding targets, thus measuring the target's net distance.

Objects that sway but don't move more than a set distance are cancelled out.



Anti-Mask and "Dirty Lens" alerts

Anti-mask protection is achieved by 4 active IR channels that continuously monitor and warn of any lens masking attempts.

The 4 active IR channels also provide a unique "dirty lens" alert via a separate output or via the ProSYS bus, indicating that lens cleaning is required.

Digital Correlation Technology

Digital Correlation Technology is based on comparing the signals of two independent PIR channels, with separate lenses that create a vertically interlacing detection pattern.

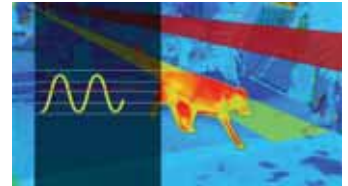
Digital Correlation Technology ensures that only targets that cause similar and correlated signal patterns in both PIR channels are taken into account.

This eliminates false alarms from pets, reflections, car headlights, and rapid temperature changes caused by wind or changing sun/shade patterns from cloud movement.

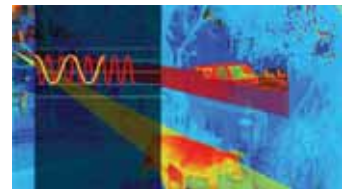
Digital Correlation Technology is a major improvement over conventional detectors with two PIR channels, which may false alarm when unrelated events, with different signal patterns, occur simultaneously in each of the PIR channels.



Correlated signal in both channels = PIR Alarm

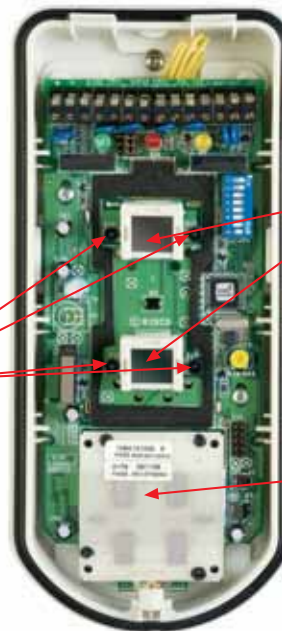


Signal in one channel only = No PIR Alarm



Uncorrelated signal = No PIR Alarm

4 Active IR channels for Anti-Mask and Dirty Lens Alerts



2 PIR channels with protective shielding enable Digital Correlation Technology

2 MW channels enable Sway Recognition Technology

Wireless WatchOUT

Now you can install the award winning WatchOUT without the hassle of wiring!



Wireless WatchOUT has identical detection features to the WatchOUT PIR, with the addition of Active IR for Anti-mask, making it the only wireless outdoor detector with anti-masking capability.

Wireless WatchOUT is compatible with RISCO Group's Wireless Systems and Receivers.

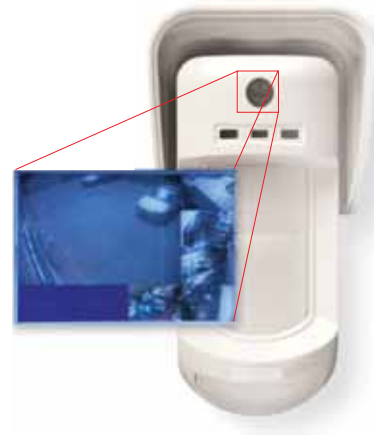
Two long-life lithium batteries are included.

WatchOUT with Camera

WatchOUT detectors enable inclusion of a high-definition camera for viewing the cause of the alarm.

Camera options include high definition colour or black and white cameras with wide-angle or long-range lenses.

Outdoor detector cameras are ideal in applications where budget is limited. It is more cost-effective to install a WatchOUT with camera than a separate weather-proof camera.



Remote Diagnostic and Control

Up to 32 WatchOUT detectors can be installed on the bus of RISCO Group's ProSYS Integrated Security System with no need for physical zone expanders. This provides time-saving remote control of all detector settings and advanced remote diagnostic capabilities, via the ProSYS keypad or the Upload/Download software.

Remote Control setting capabilities

- LED control: 3 LEDs / 1 LED / Off
- Detection sensitivity
- MW range
- Alarm logic: AND / OR
- Lens type: Wide-angle / Long-range
- Anti-mask: On / Off
- Follow arm: On / Off



Remote Diagnostic capabilities

- Voltage input to the detector
- Signal level and noise level of each PIR sensor
- Signal level and noise level of each MW channel
- Software version

Installation flexibility for precise coverage

WatchOUT™ detectors feature exceptional installation flexibility, enabling you to provide precise coverage for the terrain to be protected.

This flexibility is due to the detector's variable mounting height from 1.0m to 2.7m (3'3" to 8'10"), and due to the wide range of swivels available: Standard Wall Swivel, Barrier Swivel, Conduit Adaptor, Swivel Metal Conduit and Pole Adaptor, all with anti-vandal wire protection.

The Swivel Metal Conduit provides a solution for installations with the Standard Swivel when wiring is external to the wall.



Standard Swivel



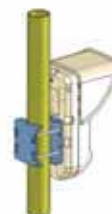
Swivel Metal Conduit



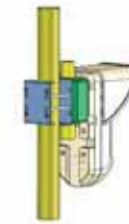
Pole adaptor



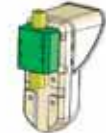
Barrier Swivel



Pole Adaptor



Pole and Conduit Adaptors



Conduit Adaptor

WatchOUT Specifications

	WatchOUT DT	WatchOUT PIR	Wireless WatchOUT
Detection method	Two microwave and two PIR channels	Two PIR channels	Two PIR channels
Wide angle coverage	15m (50') 90°	12m (40') 90°	12m (40') 90°
Long-range coverage	23m (75') 5°	23m (75') 5°	23m (75') 5°
Barrier coverage	15m (50') 5°	15m (50') 5°	15m (50') 5°
Mounting height	1m to 2.7m (3'3" to 8'10")		
Pet immunity	Animals up to 70cm (2'4") head height with no weight limitation		
Anti-mask	Via 4 active IR channels	-	Via 4 active IR channels
Dirty Lens Indication	Via 4 active IR channels	-	-
Day/Night output	-	Activated via photocell	-
Operating voltage	9-16 VDC		Two 3V x Lithium Batteries
Current consumption Relay mode at 12V	45mA typical, 70mA maximum	42mA typical, 65mA maximum	35uA at 3 VDC (average)
Current consumption bus mode at 12V	30mA typical, 55mA maximum	37mA typical, 61mA maximum	-
Alarm contact	NC, 100mA, 24 VDC	-	-
Tamper contact	NC, 100mA, 24 VDC		
Anti-mask contact	NC, 100mA, 24 VDC	-	-
Dirty lens output	70mA open collector	-	-
RF immunity	40V/m from 30MHz to 2 GHz		20V/m (80MHz to 2 GHz)
Environment rating	IP 65		
Operating temperature	-30°C to 60°C (-22°F to 140°F)		-25°C to 60°C (13°F to 140°F)
Dimensions (LxWxD)	220 x 115 x 120mm (8.66 x 4.52 x 4.72")		

Ordering Information

Part Number	Description
RK315DT00xxA	WatchOUT DT with 2 MW, 2 PIR channels and Anti-Mask. Includes additional barrier lens, long-range lens, pet immunity lens for low installations and standard swivel.
RK312PR0000A	WatchOUT PIR with 2 PIR channels. Includes additional barrier lens, long-range lens, pet immunity lens for low installations and standard swivel.
RWT312PR800A	Wireless WatchOUT PIR 868MHz with 2 PIR channels. Includes additional barrier lens, long-range lens, pet immunity lens for low installations and standard swivel
RWT312PR400A	Wireless WatchOUT PIR 433MHz with 2 PIR channels. Includes additional barrier lens, long-range lens, pet immunity lens for low installations and standard swivel
RA300B00000A	Barrier swivel for WatchOUT
RA300P00000A	Pole adaptor for WatchOUT
RA300C00000A	Conduit adaptor for WatchOUT
RA300SC0000A	Swivel Metal Conduit for WatchOUT, for use with standard swivel
RA300VC017yA	WatchOUT cover with CMOS colour camera, 17° narrow-angle lens y: Select P or N according to video system P-PAL N-NTSC
RA300VC053yA	WatchOUT cover with CMOS colour camera, 53° wide-angle lens y: Select P or N according to video system P-PAL N-NTSC
RA300VPS100A	220VAC / 6VDC Power Supply for WatchOUT CMOS Camera
RA300VPS200A	110VAC / 6VDC Power Supply for WatchOUT CMOS Camera
RA300VC0001A	WatchOUT cover with adaptor for WATEC CCD camera (camera not included)
RA300HS0000A	WatchOUT Demo Housing + swivel bracket, without electronics; for demo display or "scarecrow" installation

xx select the microwave frequency for your market according to the following list:

- OO 10.525 GHz for most markets
- UK 10.587 GHz for UK
- FR 9.9 GHz for France and Czech Republic
- DE 9.35 GHz for Germany

Coverage Patterns

Wide-angle lens

Side view 15m (50')

Top view 90° 15m (50')

12m (40') for PIR and Wireless models

Barrier lens

Top view 15m (50') 5°

Side view 15m (50')

Long-range lens

Top view 23m (75') 5°

Side view 23m (75')

Pet immune lens for installations below 1.7m (5'7")

Side view 15m (50')

12m (40') for PIR and Wireless models

EN 50131-1 Grade 3, Class III
(Grade 2 - for PIR and Wireless Models)



© 06/2007 RISCO Group



Creating Security Solutions.
With Care.

riscogroup.com

UK Tel:+44-161-655-5500 Fax:+44-161-655-5501 E-mail: sales@riscogroup.co.uk
ITALY Tel:+39-02-66590054 Fax:+39-02-66590055 E-mail: info@riscogroup.it
SPAIN Tel: + 34-91-490-2133 Fax: +34-91-490-2134 E-mail: sales-es@riscogroup.com
FRANCE Tel: +33-164-73-28-50 Fax: +33-164-73-28-51 E-mail: sales-fr@riscogroup.com
BELGIUM Tel: +32-2522-7622 Fax: +32-2524-4929 E-mail: sales-be@riscogroup.com

U.S.A. Toll Free:1-800-344-2025 Tel:+305-592-3820 Fax:+305-592-3825 E-mail:sales-usa@riscogroup.com
BRAZIL Tel:+55-11-3661-8767 Fax:+55-11-3661-7783 E-mail: sales-br@riscogroup.com
CHINA Tel: +86-21-52390066 Fax: +86-21-62400560 E-mail: sales-cn@riscogroup.com
ISRAEL Tel: +972-3-963-7777 Fax: +972-3-961-6584 E-mail: info@riscogroup.com