



arlo™

Camera Quick Start Guide





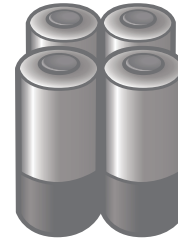
Welcome

Thank you for choosing Arlo.
Getting started is easy.

What's Included



100% wireless
camera



Lithium 123 batteries



Magnetic wall
mount

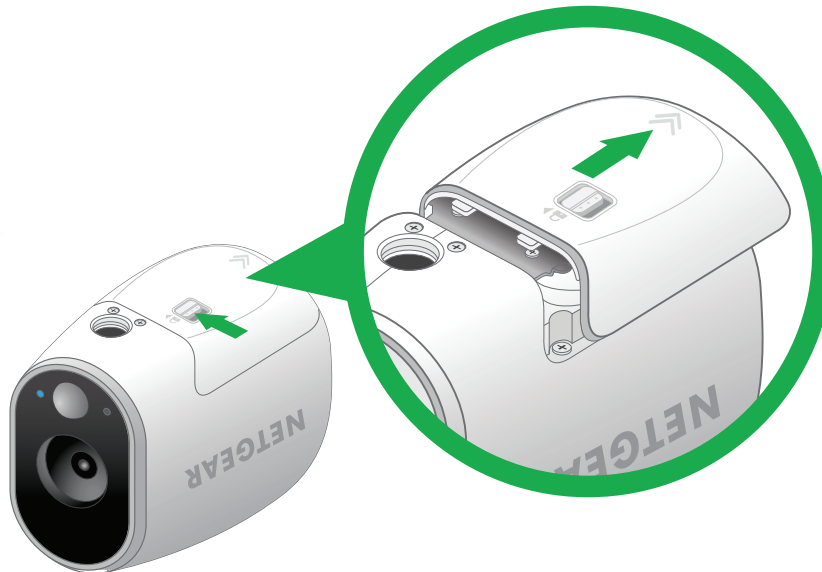


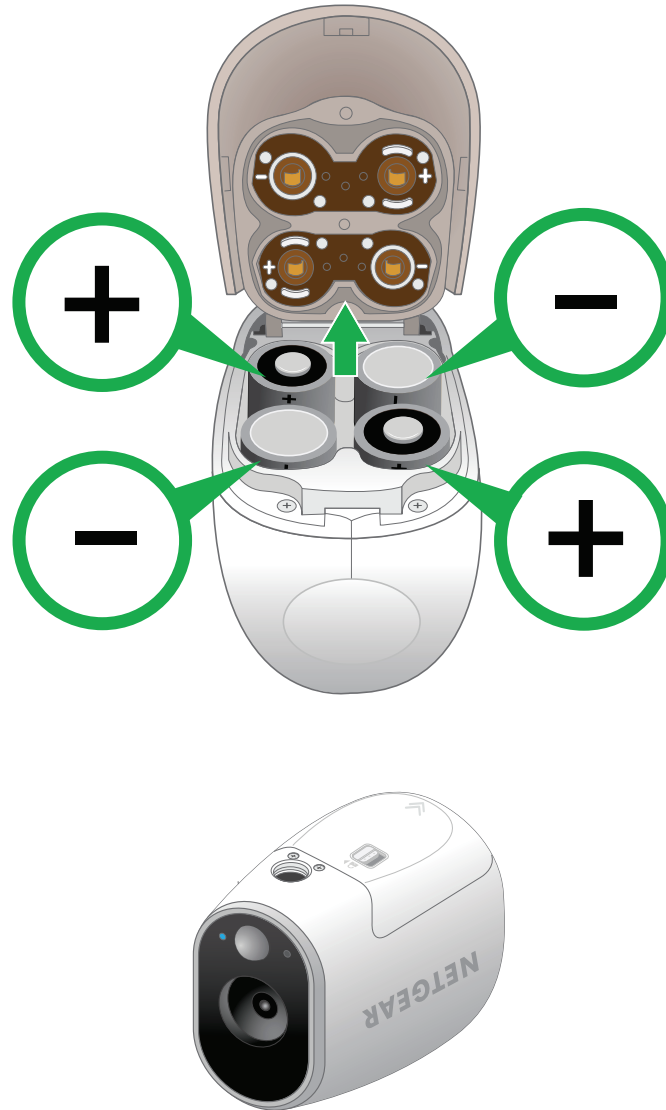
Mounting
screw

Set Up and Sync Your Camera

Insert batteries

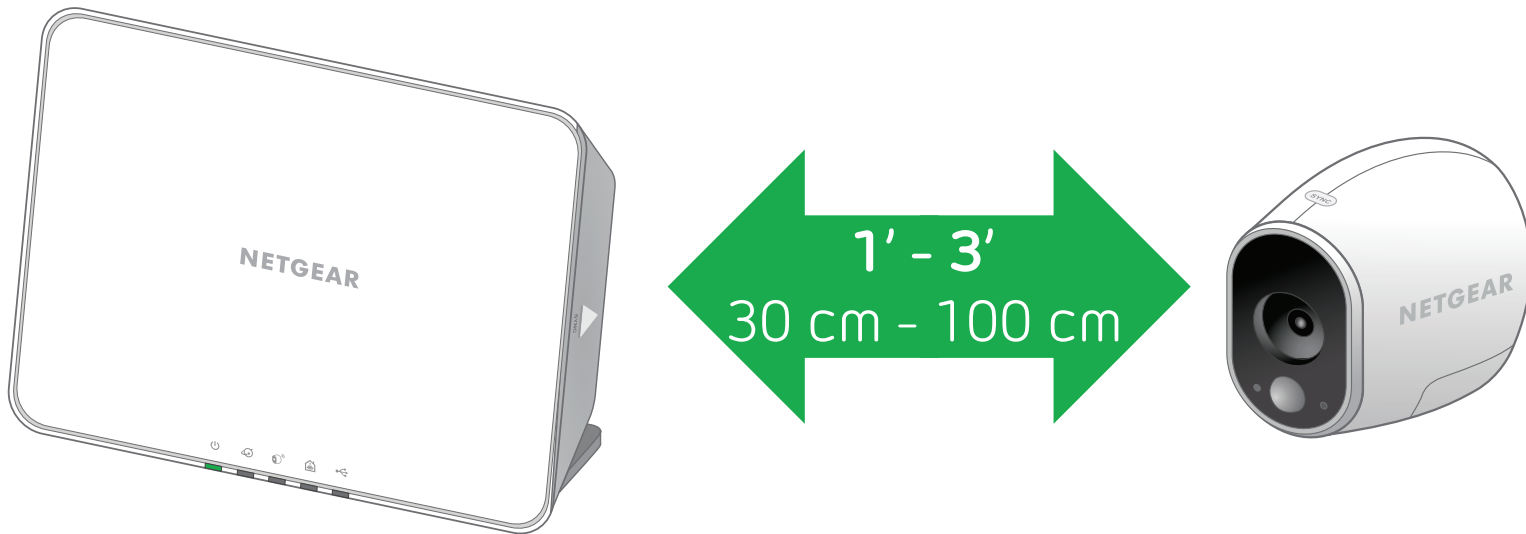
- Unlock the battery compartment by sliding and holding the latch.
- Slide the battery door back and lift it to open the compartment.
- Insert the batteries as shown and close the battery door.





Sync your cameras with the base station

Bring the camera within one to three feet (30 to 100 centimeters) of the base station.



Press the **Sync** button on the side of the base station.

Wait for the sync status LED to blink green.



Sync your cameras with the base station (cont'd)

Press the **Sync** button on top of the camera.

Cameras must be synced one at a time.



A blue LED on the camera blinks rapidly to confirm sync.

The camera is ready for viewing.

Note: *The LED blinks amber if the sync is not successful. You must repeat the sync process.*



You're Done!

Congratulations! Your Arlo camera is set up and ready to go.

To view useful tutorial videos, find troubleshooting tips, or get support, visit <http://support.arlo.com>.

©NETGEAR, Inc. NETGEAR, the NETGEAR Logo, and Arlo are trademarks of NETGEAR, Inc.

Compliance

For regulatory compliance information, visit
<http://www.netgear.com/about/regulatory/>.

NETGEAR®

350 East Plumeria Drive
San Jose, CA 95134, USA

January 2015



201-17864-04

